



# Welcome to London Meed Primary School





# Meet our staff

Miss Griffiths  
EYFS Lead  
Apple class teacher



Mrs Hair  
Cherry class  
teacher



Mrs Denham  
Cherry class  
teacher



Ms. Dowley-  
Head



Mr Terrill - Deputy  
Head



## EYFS Learning Support Assistants -

LSAs  
Mrs  
Garwood

Mrs  
Potts



Mrs Tagg



Miss Fishbourne



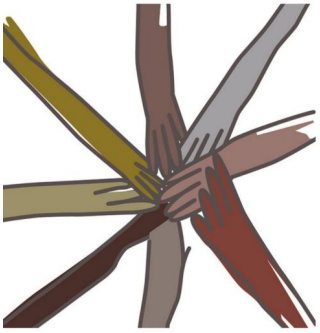
Mrs Grover

Mrs Palethorpe -  
SENCO

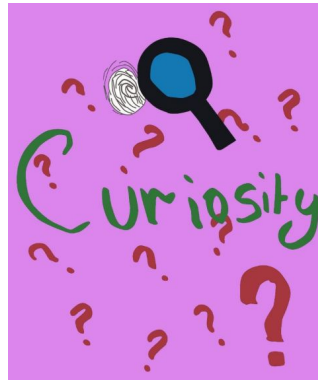


# Our School Values & Rules

Community



Curiosity



## Our Golden Rules

Be kind and gentle  
Listen when others are talking  
Always tell the truth  
Do your best  
Be polite and helpful  
Look after your own and other people's property

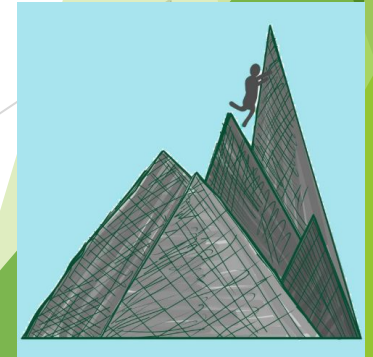
Bravery



Respect



Resilience



# What you can expect from us as a school

Nurture

**FUN!**

TLC

Exciting learning, trips and experiences

Promoting independence

Respect

Positive start to school

We will listen to you and your child

Comfort

High expectations

Good communication

Building quality relationships with children and parents

Promoting healthy choices

Support - workshops meetings, formal and informal chats



# What does our school day look like in Reception?

The Reception year is also referred to as Early Years Foundation Stage (EYFS).

**8:35 - 8.45 am** - Drop off - Children will be greeted by an adult before they enter school, as they come through the door and in each class with our special meet and greets.

When they come in they will be supported to self register by putting their Apple or Cherry on the tree.

*Throughout the day, children will have opportunities for a range of whole class learning, small group activities and plenty of opportunities to freeflow, play and learn independently with their friends. They have access to both classes and our EYFS garden throughout the day.*

**11:45 - 1.00pm** - Lunchtime and play on the KS1 playground followed by registration after lunch in class.

**1-3.15pm** - More whole class learning, small group activities and independent play and learning.

**3.15pm** - Hometime! Children will be picked up from the EYFS playground



# Snacks, drinks and lunch!

## Water bottles

Children should bring a filled, labelled water bottle to school everyday please. This should only contain water, as per our school policy. Children are able to access this throughout the day, and are encouraged by staff to drink at various points of the day. Drinks are also provided with school lunches.



## Snacks

All children are provided with a healthy fruit or vegetable snack each day. We have a rolling snack table, so children can access their snack whenever they want to. Milk is also provided for children to access at the snack table.

## Lunches

All children are entitled to a free hot school lunch everyday while in school. These need to be ordered 2 weeks in advance, online, through our provider Chartwells. If you want to provide your child with a healthy packed lunch please ensure it comes in a named lunchbox.

Children are supported during lunchtimes for the first few weeks by EYFS staff as well as midday meals supervisors.

***\*See handbook for details of lunches, free school meals and how to order.***

# What to expect between now and September

## Nursery visits - 2nd July 2025

All children have been invited to come and visit us with their current setting / key workers for a stay and play session. Settings have been contacted. If you haven't heard about this or had contact from your setting, please have a chat with us, as a parent can attend with their child instead if you wish.

## Summer holidays

Keep an eye on the post, as we will be sending your child a special letter during the summer holidays with something special to put up for our home visit.

## Home visits

You will have been contacted by school with a date for your home visit where your child's class teacher/ s and LSA will visit your child at home as part of our 'Getting to know you' introduction to school.

## Stay and plays / getting to know you sessions

Children have 2 stay and play sessions, 1 with you and 1 without following home visits. They should wear school uniform. They will also have 1 half day (including lunch) where they will be getting to know their new school environment and teachers. (Arranged by DOB)

***\*Dates for these are In your handbook.***

**Children are in full time  
from 15th September!**

## How we will communicate with

you

- Learning letters once a week
- Messages on Google Classroom
- Curriculum overviews for each term
- Class reps
- Whole school newsletters
- After school if we need a chat
- Via email or phone when necessary
- First aid notes if your child has been hurt

## How you can communicate with us

- Through the school office
- Via email  
[theorchard@londonmeedprimary.co.uk](mailto:theorchard@londonmeedprimary.co.uk)
- Arrange an appointment after school with a class teacher
- Via class reps for whole year group queries



# Countdown to school checklist!

## Have you got...

- Uniform
- PE kit
- Welly boots
- Bookbag
- Water bottle
- Sun hats
- Waterproofs / all in ones



## Have you ...

- Ordered lunches
- Signed the library agreement
- Signed photo permission forms
- Applied for free school meals if you are entitled
- Signed up to scopay



# School uniform

Please  
make sure  
everything  
is named!

Children may wear their  
own clothes on their  
birthday or the day before  
or after if it falls on a  
weekend.



## Key reminders:

- **No** laces please unless children can do them up themselves.
- You do not need branded uniform
- We keep spare clothes in school
- More information is in your handbook.



# Meet our LMA and Governors

- The LMA is our Parents & Teacher Association (PTA) for the London Meed Primary School
- Who are we?
  - We are a team of parents & carers, teachers and school staff working together to support the school community.
  - New LMA committed formed in May 2025
    - Parents of children from Reception to Year 6
    - Teachers and school staff
    - ... plus a brilliant team of regular volunteers
- What do we do?
  - Support and enrich our children's lives and experiences at London Meed Primary School
  - Organize fun and inclusive events and activities for pupils and families
  - Raise funds to support the school and children



# LMA – What we've been up to this year...

## •Events

- School Discos
- Reception's "The Tiger Who Came to Tea"
- Christmas Wreath Workshop
- Christmas Fair featuring the Grinch Escape Room and Santas Workshop
- Summer Fair & Color Run
- Design & coloring competitions for the students
- ... which allowed the LMA to support the purchase of
- Classroom resources, lockers, playground equipment, Christmas parties & lunches, coaches for school trips, sensory room....

## •Our fundraising target

### Timber 5-Way Huddle Swing



# LMA – How to get involved?

- Automatically join our LMA when you start at the school!
- **We always welcome help – big or small**
- Join the Committee
- Volunteer at events
- Share skills: baking, help with advertising, decorating, ...
- **Contact us:**
  - Email: [Ima@londonmeedprimary.co.uk](mailto:Ima@londonmeedprimary.co.uk)
  - Website: [https://www.londonmeedprimary.co.uk/web/welcome\\_to\\_the\\_Ima/710261](https://www.londonmeedprimary.co.uk/web/welcome_to_the_Ima/710261) (to be updated)
  - Follow us on: <https://www.facebook.com/londonmeedassociation>
  - **Together, we can continue to support London Meed in creating an exceptional place for our children and families.**





# You're Invited: Summer Fair Time!



A colorful invitation poster for the Summer Fair. It features a yellow background with various activities listed in colored circles: Face Painting (blue), Tombolas (green), BBQ (dark blue), Free Admission (yellow), Raffle (purple), Games (red), Inflatables (light blue), and LMA Presents (white). The text 'LONDON MEED Carnival' is written in a mix of blue and black fonts, with 'SUMMER FAIR' in large, multi-colored block letters. Below this, a dark blue banner contains the date and time: 'Friday 4th July 3:30-6:30PM'. A red arrow-shaped box points to the URL 'BIT.LY/LMA-FAIR'. A QR code is located in the bottom left, next to the text 'AT LONDON MEED PRIMARY SCHOOL'. A blue circle on the bottom right states 'CASH ACCEPTED' and 'CARDS PAYMENTS CAN BE USED TO PURCHASE GAME TOKENS'. At the bottom, a green bar contains the school's address and the LMA's registered charity status.

FACE PAINTING

TOMBOLAS

BBQ

FREE ADMISSION

RAFFLE

GAMES

INFLATABLES

LMA PRESENTS

LONDON MEED *Carnival*

**SUMMER FAIR**

Friday 4th July 3:30-6:30PM

BIT.LY/LMA-FAIR

AT LONDON MEED PRIMARY SCHOOL

CASH ACCEPTED

CARDS PAYMENTS CAN BE USED TO PURCHASE GAME TOKENS

YOU CAN ALSO SCAN THE QR CODE TO PREORDER GAME TOKENS

London Meed Primary School Chanctonbury Road Burgess Hill RH15 9YQ  
London Meed Association (LMA) is a registered charity 1016352



A colorful invitation poster for the Summer Fair, similar to the one on the left but with a yellow background. It features the same list of activities in colored circles. The text 'LONDON MEED Carnival' is written in a mix of blue and black fonts, with 'SUMMER FAIR' in large, multi-colored block letters. Below this, a dark blue banner contains the date and time: 'Friday 4th July 3:30-6:30PM'. A large pink box at the bottom right contains the text 'STALLHOLDERS WANTED!' in bold blue letters, followed by 'BOOK YOUR STALL AT OUR SUMMER FAIR AT LONDON MEED PRIMARY SCHOOL COST £20' and 'EMAIL: lma@londonmeedprimary.co.uk'. At the bottom, a green bar contains the school's address and the LMA's registered charity status.

FACE PAINTING

TOMBOLAS

BBQ

STALLS COST £20

RAFFLE

GAMES

INFLATABLES

LMA PRESENTS

LONDON MEED *Carnival*

**SUMMER FAIR**

Friday 4th July 3:30-6:30PM

**STALLHOLDERS WANTED!**

BOOK YOUR STALL AT OUR SUMMER FAIR  
AT LONDON MEED PRIMARY SCHOOL  
COST £20  
EMAIL: [lma@londonmeedprimary.co.uk](mailto:lma@londonmeedprimary.co.uk)

London Meed Primary School Chanctonbury Road Burgess Hill RH15 9YQ  
London Meed Association (LMA) is a registered charity 1016352



# WHAT NOW??

Come down to The Orchard and familiarise yourself with our classrooms, learning areas and meet all the teachers! Please feel free to ask any questions you want, or just come and introduce yourselves and say hi!

Have a tea / coffee, enjoy a biscuit and if you want to peruse our second hand uniform there is a stall ready to buy if you want.

